

# PlusPoints

05/0218C

## *The News Bulletin from Autoscribe Ltd*

### **Matrix Nuclear Monitoring System – for district survey, liquid discharge, gaseous discharge and chemistry applications all in one system**

The Matrix Nuclear Monitoring System is a versatile, configurable software system suitable for environmental and chemistry applications within the nuclear industry. Furthermore the system is suitable for many variations of work and sample tracking.

Registration allows the entry of sample details manually or via a scheduler that performs this task automatically. Routine, non-routine, historic and/or ad hoc samples may be registered. For district survey work, for example, a grid reference, a sampler i.d. and the date scheduled and date sampled can all be entered - and more if needed.

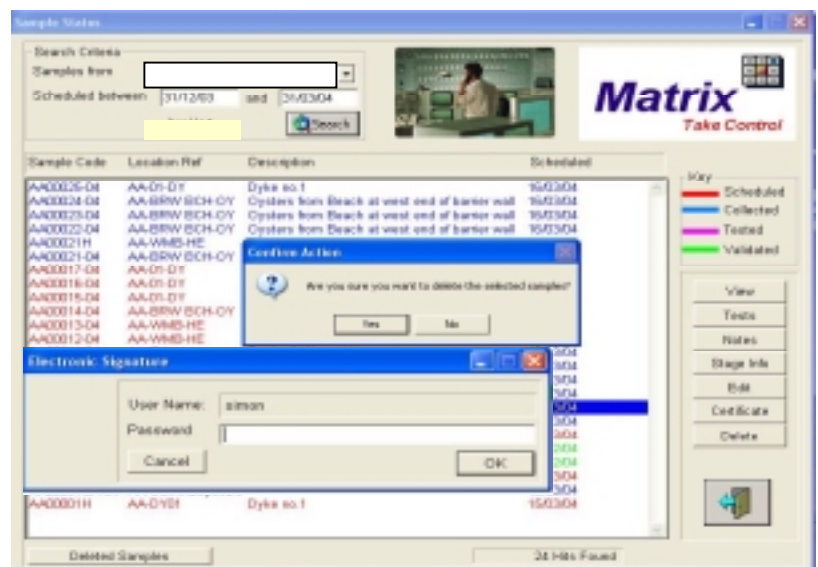
The sample collection function includes the printing of sampling work lists, map locations of sampling points, with directions, and labels for sample containers. A distinction can be made at this stage between statutory and non-statutory samples with colour coding being used on screens listing samples that are to be, or have been, collected.

Test definitions can be created to exactly match the requirements of the nuclear industry.

Test results can be entered manually via a keyboard or directly using links to instruments such as gamma spectrometers and scintillation counters.

Remote result entry can be done using a hand-held computer configured using the powerful tools supplied with Matrix.

Sample status screens are provided and colour coding is used to differentiate the different status levels e.g. scheduled, collected, tested and validated.



A variety of reports are supplied with the system including a 12 point rolling average trend report with nested limits and alarms.

The system may be extended to other work flows suitable for liquid and gaseous discharge monitoring by adding further configured screens and tables to the system.

Access to the system is controlled by a comprehensive security system utilising a class based structure relating to job function and/or authority.

**For further details please contact:**

#### **AUTOSCRIBE LTD**

Wellington House, Riseley Business Park, Basingstoke Rd, Riseley, Berkshire, RG7 1NW

Tel: +44 (0) 118 984 0610 Fax: + 44 (0) 118 984 0611

E-mail: [matrix@autoscribe.co.uk](mailto:matrix@autoscribe.co.uk)

Website: <http://www.autoscribe.co.uk>